

AGM Guide

Wednesday 7 May 2025 – 2.30pm

How to join

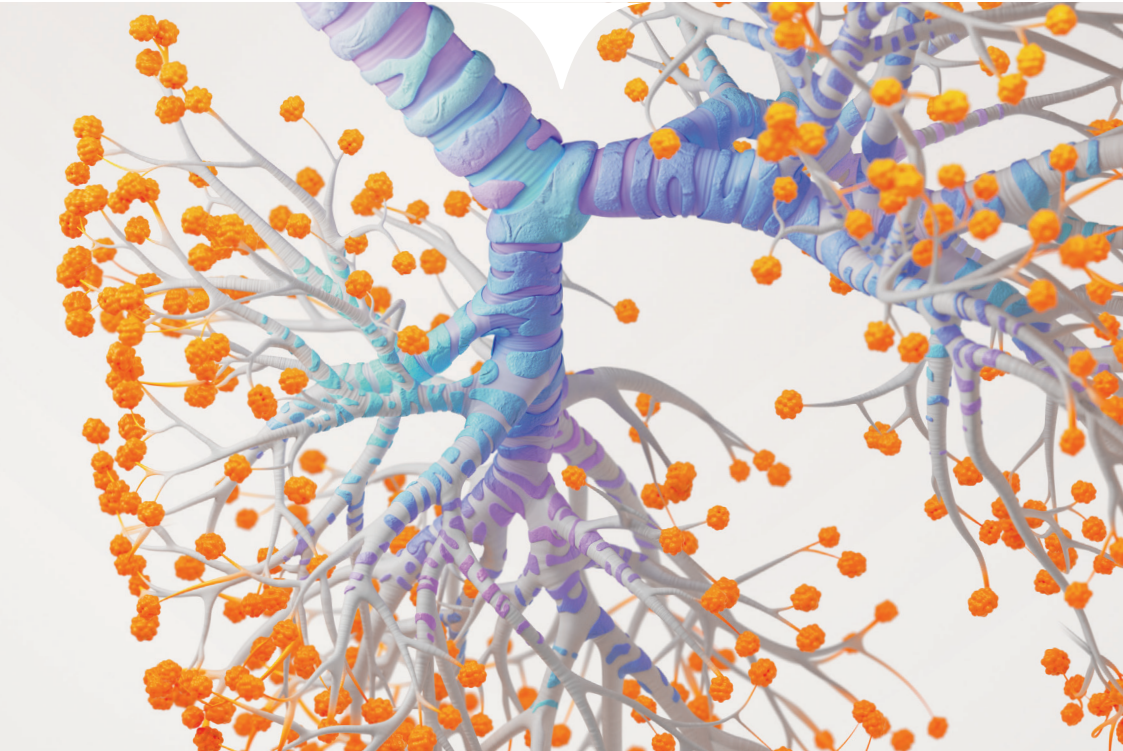
This year's AGM will be held electronically and physically, offering shareholders flexibility in how they wish to attend.

Joining electronically via the Lumi AGM website will offer you the full AGM experience without the need to travel.

The physical AGM will be held at The Landmark London, 222 Marylebone Road, London, NW1 6JQ.

	Watch	Listen	Ask questions	Vote
Lumi	<input checked="" type="checkbox"/>	<input checked="" type="checkbox"/>	Oral/written	<input checked="" type="checkbox"/>
Physical	<input checked="" type="checkbox"/>	<input checked="" type="checkbox"/>	Oral	<input checked="" type="checkbox"/>
Zoom	<input checked="" type="checkbox"/>	<input checked="" type="checkbox"/>	Video	<input type="checkbox"/>

This is a summary guide to participating in the 2025 AGM. Full details can be found on pages 26 to 30 of the Notice of Annual General Meeting 2025.



Getting started on Lumi

1

Visit www.lumimeet.com/106017857

You can join the meeting from 1.30pm on Wednesday 7 May 2025.

2

Enter your SRN and PIN

Each SRN and PIN can only be used to log in on one computer or laptop at any one time.

3

Allow access to audio

Click 'Allow' when prompted to enable access to your microphone and camera (note your camera will not be needed).

4

Connect to webinar

Click the 'Join' button on the right-hand panel, then click 'Join Audio by Computer' button. You must join the webinar in order to watch the AGM and view the slides.

5

Participate in the meeting

The Lumi AGM website features, including Questions and Voting tabs, are shown on the left-hand panel.

To log in you must have your SRN and PIN which can be found in your Proxy Form, Form of Direction or voting email

How to use the Lumi AGM website

Information

Once logged in, instructions on how to navigate the Lumi AGM website can be found in the Home tab in the left-hand panel.

Watch

The AGM will be broadcast in the right-hand panel. This can be made larger by clicking the full screen icon in the top right-hand corner.

Questions

To submit a typed question, click the Messaging tab, type your question, and click the arrow icon to submit.

To ask a question orally, click the 'Raise Hand' icon in the right-hand panel. You will be able to speak once indicated by the Chair. Ensure to unmute yourself when prompted.

Resolutions

When the Chair declares the poll open, a list of all resolutions and voting choices will appear in the Voting tab.

Scroll through the list to view all resolutions.

Full details of all resolutions are given in the Notice of Annual General Meeting 2025 which can be found by clicking in the Documents tab.

Vote

For each resolution, select how you wish to vote. When selected, a confirmation message will appear.

To change your mind, simply press the correct choice to override your previous selection. If you wish to cancel your 'live' vote and not submit a vote to the meeting, please press Cancel.

Help

If you encounter any problems during the meeting, please type a question in the Messaging tab and click the arrow icon to submit. Click into My Messages to view the response.

Technical requirements

To ensure successful participation in the electronic meeting via the Lumi AGM website or Zoom, an active internet connection is required.

Mobile telephones and tablets are not suitable to connect to the broadcast via the Lumi AGM website. Please use the latest version of Chrome, Edge or Firefox and note that Safari and Internet Explorer are not compatible.

Physical meeting

If you do not wish to join electronically you can join us at The Landmark. Please see your Proxy Form or Form of Direction for additional details on how to get to The Landmark.

We will notify any changes via our website and you are encouraged to check it to ensure you are informed of any changes.

A reminder...

Participating by Lumi AGM website

Visit <https://web.lumimeet.com/106017857>

Have your Proxy Form, Form of Direction or voting email to hand which contain your SRN and PIN.

Access is available from 1.30pm (UK time) on Wednesday 7 May 2025.

Participating by Zoom

Pre-register to participate by Zoom by emailing your name and SRN to company.secretary@gsk.com by 5.00pm on Thursday 1 May 2025.

Questions for the meeting

Submit typed questions in advance by 5.00pm on Friday 2 May 2025 via the Lumi AGM website or click the "Raise Hand" icon during the meeting to speak.

General questions?

Please contact our registrar, Computershare Investor Services on +44 (0) 370 707 1595* or see page 34 of the Notice of Annual General Meeting 2025.

* Lines are open from 8.30am to 5.30pm, Monday to Friday excluding public holidays in England & Wales.



Scan the QR code to visit [GSK.com](https://www.gsk.com)
Behind the science and find out
more about our innovation stories.